

Club Journal

August 2014

The magazine for all CIU members

75p

SIX NOMINATED TO BE GENERAL SECRETARY



High flier celebrates

Former airman Eric Clarke has celebrated his 101st birthday at what he describes as the best club in the country, Carcroft Village WMC near Doncaster.

Eric may be the oldest surviving member of Bomber Command as well as the oldest clubman still enjoying his regular pint.

Full story – Page 3

Six candidates have been nominated to fill the vacant post of Union General Secretary.

Among the six are three current Branch Secretaries: Ken Green from South Yorkshire, Frank Healy from York City and Michael Woodvine from Burnley & Pendle. Also on the list are former National Executive member Philip Larkin from West Yorkshire Branch; Alan Dudson, Secretary of Bloxwich Memorial Club in Walsall and Allan Nisbet, Chairman of Kenton & District WMC in Newcastle.

Nominations closed shortly before *Club Journal* went to press. The list of nominations is as follows (names of nominating clubs in brackets):

Alan Dudson: (Bloxwich Memorial Club, Walsall);

Ken Green: (Darfield Road WMC, Barnsley);

Frank Healy: (Acomb WMC, York);

Philip Larkin: (East Ward Labour Club, Bradford);

Allan Nisbet: (Kenton & District WMC, Newcastle);

Michael Woodvine: (Nelson Carters' and Motormen's, Lancashire).

The General Secretary will be an officer of the Union rather than an employee as in the past and will be paid an honorarium of £1,000.

Ballot papers including the candidates' statements, photographs and biographies were being posted to all clubs on August 1. Each club has one vote, which must be received by Friday, August 29. The count will take place on September 1 and the result will be announced at the National Executive meeting on September 3.

INSIDE

The Union's acclaimed distance learning course, the Club Management Diploma, marks its 80th birthday this year and is as relevant as ever.

The course began in 1934 and is regularly updated. It includes monthly lessons on law and accountancy and is of great benefit not only to officials but to all club members. Those who choose to take the exams at the end of the course and successfully pass both parts can have the letters CMD after their name.

In the 80s after 50 years of the course the then Education Secretary Kevin Smyth noted that only 1,372 people had passed the CMD, meaning it had a greater rarity value than the VC! To try to join that select band fill in the form on **Page 12** or contact the Union's Leisure Department.

Two clubs have pre-empted this month's centenary of the outbreak of the First World War with special events of their own; at the same time what could have been the Union's oldest Branch marked its own centenary with a special cake.

Club honours Flanders Fallen – P2

Branch Centenary – Pages 10,11



A Royal proposal

Clubman Paul Walsh from Willesden WMC in London proposes to his girlfriend in front of the Queen. Find out what happened next on **Page 19**.

Union President George Dawson has received a response from HMRC over the repayment of VAT in the Linneweber case.

See Page 6. Letters – Page 13

The Union has repeated its advice to clubs not to try to show football matches on Saturday afternoons. Meanwhile Sky Sports have raised prices for the first time in five years.

Sport – Pages 18-20.

Club pays its own tribute to the fallen of Flanders



Ken Wilton is pictured at the Menin Gate where he laid a wreath on behalf of Hayes WMC.

This month sees commemorations across the country to mark the centenary of the outbreak of the First World War but, as we report elsewhere, some clubs have already marked it in their own way. A group of members from Hayes WMC in West London travelled to Ypres in Belgium and laid a wreath on behalf of the club at the

Menin Gate in honour of the fallen. The wreath was laid just before the Last Post ceremony, which has been held there every evening since it opened in 1927.

Those who were in the group (picture below) were: Steve Jameson, Eddie Hayes, Derek French, Ken Wilton, Pat Curl, Roy Shields, Norman Willimont, Peter James, Bill Wynne, Terry Dent, Mick Harvey, John Sharpe, Harry Blackwood and Terry Side.

The land around Ypres is dotted with many cemeteries but these are for those whose bodies were found. Many head stones are marked "Known unto God" or "A Soldier of the Great War" for soldiers



whose name could not be found.

The Menin Gate is for those men whose bodies were never found. A total of 54,896 men died between August 4, 1914 and August 15th, 1917 and have no known grave. Men killed in the Ypres salient after this date with no known grave - are commemorated at the Tyne Cot cemetery.

Sir Reginald Blomfield designed the Menin Gate and after work was begun in June 1921 with a grant of £150,000 from the British government, it was finished in July 1927.

At the inauguration ceremony on July 24th 1927, the buglers of the Somerset Light Infantry sounded The Last Post. Since then The Last Post has been played each night at 8pm by buglers from the Ypres Fire Brigade. The only time this was not done was during the German occupation of Belgium in World War Two. It was restarted the very night that the Germans left.



Among the places the group also visited nearby were: **Mendingham Cemetery**, where Derek French's uncle Leonard Barwick French is buried.

Lijssenthoek Cemetery, where Belgian-born English rugby international and Surrey cricketer John Raphael is buried. His mother's ashes were also interred here.

Brandhoek Cemetery, where medical officer Noel Chevasse, who was awarded two VCs, is buried. Talbot House, where officers and men could relax whilst on leave from the battle front. The Execution Cells and Post, where deserters were held before execution at the Post.

Sanctuary Wood and Hill 62, site of a museum, reproduction trench system and Canadian Memorial.

Essex Farm Cemetery, where Canadian doctor John McCrae wrote the poem "In Flanders Fields" at the dressing station.

The Yorkshire Trench, site of a preserved trench system.

Langemark German Cemetery, which contains the mass graves of some 25,000 Germans as well as two British soldiers, who died in late 1918.

Hooze Crater, where there is a small museum, the battle area around the now water-filled crater and a cemetery.

Tyne Cot Memorial, the site of a large memorial and cemetery with 11,956 buried here, 8,369 of them unidentified.

HAYES WORKING MEN'S CLUB LATE NIGHT CABARET

September 27
Sing Baby Sing
Michael Jackson
tribute + dancers
The Beat Legends

PUMP LANE, HAYES, MIDDLESEX UB3 3NB
SHOW £10 PER TICKET (OVER 18 ONLY)
Bar open until 1.00 am - Doors open 7.00 pm
Coach parties welcome by prior arrangement - please contact Secretary for information and tickets on:
020-8573-1721

Eric's still flying high at 101



Eric is congratulated by Trustee Derek Wallace, President Alan Baker and fellow Committee members Barry Stone, John Murray and Jim Hutchinson.

Former airman Eric Clarke has celebrated his 101st birthday at what he describes as the best club in the country, Carcroft Village WMC near Doncaster.

Eric is the oldest surviving member of 49 Squadron Bomber Command, which was based at RAF Scampton in Lincolnshire before it became the Dambusters base, and could be the oldest survivor of the whole of Bomber Command. Following the deaths of 106-year-olds Queenie Schofield and Jack Foster he may also be the oldest regular clubman still enjoying his regular pint.

During his service Eric reached the rank of Flight Lieutenant and flew in many aircraft mainly the Hampden, the Manchester or the Lancaster as a radio operator air gunner. His last operation in World War two was a daylight raid on Milan in 1942; flying at low level, his journey took nine hours over the Alps and he had to land at another base after taking flak and running low on fuel.

Eric is roughly the same age as the club, which he describes as being like a five-star hotel, and has seen many changes over the years. A big supporter of working men's clubs in general he still enjoys a pint or two every Sunday dinner accompanied by his great friend Pete Bonsall, who said: "Eric is unique because apart from poor eyesight and hearing loss he has all his faculties at 101. He is the President of the local History Society and has a remarkable memory meaning he can recall all his experiences going back for many years."



Eric receives a birthday present of a bottle of malt whisky from Alan Baker, who is also President of Doncaster Branch.

With Bomber Command losing so many lives at the height of the war, he considers himself a very lucky survivor. He still has his log book and can talk about his experiences for hours."

"With Bomber Command losing so many lives at the height of the war, he considers himself a very lucky survivor. He still has his log book and can talk about his experiences for hours."

Peek's
Kicking Off Your **FUNDRAISING**
with **10% off**
your next order!
Quote code: **CLUB** when ordering!
order anytime online!
www.peek's.co.uk
tel: **01202 489489**
Reid Street, Christchurch, Dorset BH23 2BT

CLUB REFURBISHMENT · CREATIVE DESIGNS · COMPETITIVE PRICING



Thames
CONTRACTS

PLEASE CALL 020 83680045 / info@thamescontracts.com

Thames
CONTRACTS

Thames Contracts Ltd 707 High Road, London N12 0BT

CIU1013

Being Young at Heart lifts club

A Wednesday afternoon club is making a big difference at a South Yorkshire social club a year after it was saved by a new Committee. Young at Heart meets every week at Gilroyd Social Club in Barnsley and attracts between 50 and 60 people for bingo, games, cabaret and a singsong.

"It's been great," said Club Secretary Ian Williamson. "We took over as a new Committee about a year ago when the club was in danger of closing down.

"We were able to turn it round with hard work and by being open to new ideas and there's no doubt this one has made a big difference. It's really good to see the club looking so busy on a weekday afternoon and it's meant we've seen people we haven't seen for 20 years."

The first thing the Committee did was to look at every bill. They changed beer supplier and negotiated a new deal and also saved £2,000 a year by changing their accountants.



The poster publicising this week's World War One centenary event.

The afternoon club was the idea of club member Judy Holling and her partner comedian and singer Steve Riley, who were worried that the social club was in danger of closing and that elderly people in the village would become isolated.

"I've made my living in clubs for 30 years so I wanted to give something back," said Steve. "The group has proved so popular, it's just snowballed and proved to be exactly what the community needed. We've got a little team of about 12 retired entertainers who



Entertainer Steve Riley in front of members of Young at Heart including fellow organisers Steve and Cath Ward and Judy Holling, in the dark glasses. (Picture: Barnsley Chronicle)

are happy to give their time for free, which has just been fantastic." The group's next move is to try to set up an indoor bowls and skittles club when bowling greens close in the autumn. Steve hopes that by applying for a grant as a community group rather than as a social club – which would be classed as a business – they are more likely to receive funding from their local council.

Judy was particularly pleased with the group's Easter Bonnet competition, which attracted 28 entries and this month sees the group mark the centenary of the start of World War One with a special evening and afternoon in aid of Help for Heroes.

Hayes Working Men's Club

Saltburn House Holiday Centre

Half Board accommodation £35 per person
Bed & Breakfast £25 per person
Extended periods of stay welcome
Full Disability access and facilities available with
Convalescence offered to any CIU member (subject to
availability)
Bar Meals served daily along with a full Sunday lunch menu
at competitive price

Turkey & Tinsel Breaks

Friday 21st November leaving Tuesday 25th
£160 per person

We cater for Coach Trips at any time

Price includes Half Board accommodation - includes a 4 Course Christmas
Lunch with all the trimmings on Sunday with a visit from Santa. Entertainment
each night followed by a light supper.

Please phone 01287 622008 to make a booking

SKY SPORTS AND FREE WiFi

Fancy a trip to Redcar Races? Within 10 minutes you
could be onto a winner

If you're a keen Golf enthusiast who wishes to take advantage of the
area's finest courses, Saltburn, Redcar, Wilton & Hunley Hall Golf
courses are all within a five mile radius with excellent facilities and
group bookings catered for.

Fancy getting away to the North East coast as a group? We welcome
coach parties and promise you a warm and relaxing stay.

For further details call Maxine or Joanna on
01287 622008

Members Corner

Mattresses spring a surprise

Informative articles which affect our lives

by Dione Mobley

Hello Club Members

The National Bedding
Federation (NBF) along with
the Yorkshire Trading Standards Authority have recently issued warnings about
fake mattress scams, which appear to be spreading throughout the country.

Beware. Many people have been fooled into thinking they are buying a new
mattress at a greatly reduced price and getting a bargain when shopping with some
of these rogue traders, who may have what looks like legitimate retail premises.

They are also known to go out in vans and target neighbourhoods by going door to
door selling for cash profit and taking advantage of customers looking to buy at a
much discounted price.

Unfortunately, the reason these scammers can offer these "amazing deals" is they
go out and collect any discarded old used mattresses and bedding they can get their
hands on, usually recovered from skips or rubbish dumps and then they have them
very skilfully re-covered and sold on as brand new to their unsuspecting customers.

The bargain mattress you think is brand new can, however, come riddled with bugs
inside and not meet the British Fire Retardant to Foam Standards.

It is important when buying a mattress for your bedroom that you always look for
the (NFB) Logo before you purchase.

So, be careful shoppers.....



Ovington Social Club Committee member Ed Cowperthwaite is pictured after receiving his Long Service Award from Northumberland Branch Secretary Dave Richardson to mark 25 years' service. With them are Club Secretary John Little, Branch Executive member Norah Tinnion and (right) Chairman Keith Gilholme.

Ed has worked as a demolition supervisor for more than 30 years and was part of the team that saved the club from possible demolition by working behind the bar free of charge. His other duties have included being a decorator and an organiser of other social and fundraising events at the club.

A Newcastle United season ticket holder, he also enjoys watching his grandchildren play football.

Below: Ed and his wife Ann, who is also a member of the Committee.

PROUD AND HONoured

Western Counties Branch President John Keenaghan visited the West End WMC at Chippenham in Wiltshire and presented Long Service Awards to Committee members Peter Knighton and Russell Price.



Sixty years of service were marked at a presentation evening at New Durham & District WMC where Kenny Walker received the Certificate of Merit, and Paddy Carroll the Long Service Award, while Kenny Mann also received the Long Service Award on behalf of his brother Arthur, who died recently.

Pictured (left to right) are: Club Secretary Allan Flowers, Treasurer Barry Joyce, Kenny Mann, Kenny Walker, Durham Branch Secretary George Smith, Paddy Carroll, Branch Executive member Cliff Lee and Club Chairman Jack Coulthard.

COMPUTER AIDED DESIGN

FULL INTERIOR REFURBISHMENT



Call: 01372 453915

BARS

CARPETS

FURNITURE



www.easeco.co.uk

40 Bookham Industrial Estate,
Church Road, Bookham, Surrey KT23 3EU

contact@easeco.co.uk

club management

IN ASSOCIATION WITH
The **co-operative** bank

Managing staff who are sick

I receive frequent calls from clubs about staff who've gone sick without submitting either a medical certificate or a self-certification form. This often leads to clubs either doing nothing, or worse, taking inconsistent action.

By Andrew Dane
The Business
Medic

Failing to follow a fair and proper procedure when dismissing staff for absence can lead to costly disability discrimination and unfair dismissal claims, for which the average Tribunal awards last year were £27,235 and £32,115 respectively. Such claims are increasingly likely as sacked employees struggle to secure alternative employment in current job market.

Dismissal is the last resort when dealing with genuine illness. If you comply with all four of the following stages, you are unlikely to fall foul of the law.

Stage one: meeting with the employee:

The Club Secretary should conduct regular return-to-work meetings. They should meet any staff with high levels of absence to discuss the cause of the absences, any medical advice the employee has received, the likelihood of future absences, and possible job changes that would reduce the absences. Clubs should discuss possible return-to-work dates for long term absences, and plans to assist employees when they do return.

Stage two: Medical input

There may be an underlying cause for regular absences. Clubs need medical input to understand what an employee is capable of doing, to find out if there are any adjustments that could be made to the employee's role to reduce absence levels, and to get a view on whether the employee is disabled under the Disability Discrimination Act 1995 (DDA). Any medical input should be discussed with the employee as part of the consultation process.

Stage three: Reasonable adjustments

Clubs have a legal duty to consider any "reasonable adjustments" to enable employees classed as disabled under the DDA to continue to perform their roles. Dismissing employees not classed as disabled is also more likely to be fair if the club has considered possible adjustments and alternatives. Whether or not an adjustment is reasonable will depend on:

- the practicability
- its cost and likely effectiveness
- the club's financial resources
- its nature and size and
- The extent to which the employee, and possibly other staff, are willing to co-operate with the changes.

Stage four: Dismissal decision

When considering dismissal clubs should have a full, up-to-date picture of the employee's medical condition and have considered alternatives to dismissal. They should also take into consideration:

- length of service
- performance
- whether there is likely to be a change in attendance
- whether suitable work is available and
- the effect of the employee's absence on the club.

It is always best to consult your Branch Secretary before considering dismissal.



TAX POLICY UNIT REPLY TO UNION

The tax authorities have responded to the letter from Union President George Dawson requesting a fair and non-punitive repayment scheme for CIU clubs. The President had written to the HMRC Policy Unit after some tax offices were less than helpful to clubs paying back reclaimed VAT after the recent reverse in the Linneweber case.

In their reply HMRC say: "Although there is no statutory right of time for paying these assessments, HMRC considers such requests where we consider that the business is viable but genuinely unable to pay their debt in full by the due date. To ensure consistency we have an incremental approach to gathering evidence in support of the request – based on the level of debt and timescale requested.

BANK OF ENGLAND

"In addition our advisors receive training on dealing with time-to-pay negotiations and we routinely undertake quality assurance checks on case handling. All requests are considered and decisions based on the individual circumstances of a case. Default interest is charged where appropriate on any amount of VAT which has been undeclared or over-claimed from the time the amount due should have been paid to the time it is assessed.

"This interest is intended to provide commercial restitution of the loss of understated VAT and should not be considered a penalty. Interest is charged at a simple not compound rate, and this is linked to the rate set by the Bank of England.

"Please be assured that we will consider any cases of hardship but it needs to be understood that the tax is payable and all clubs and businesses were advised of the possibility of us enforcing the assessments at the time of the received payment."

Individual clubs affected are encouraged to contact their MPs to ask that the issue be raised again at Ministerial level.

Dear Sir

Could I through your magazine please express our heartfelt thanks to Andrew Dane? He has just taken us through with ease what we thought was a nightmare and has resolved a staff problem for which our Committee are so thankful.

If you want a job doing, who ya gonna call? Andrew Dane!

Alan Caswell, President Pattingham WMC, Staffordshire

Manage your money 24/7

It's good to keep an
eye on the numbers

The **co-operative** bank

**Business Current Account Cash
Tariff** – Pay 15p per £100 when
depositing £3,000+ cash at the Post
Office®. £5 monthly service charge
applies, see tariff for full details.

Bank online, over the phone, at your
nearest Co-operative Bank branch or
at the Post Office® by arrangement.

Talk to us **0800 0282 282**
8.30am-6pm Monday to Thursday, 9am-5pm Friday
Visit us co-operativebank.co.uk/business

The Co-operative Bank is authorised by the Prudential Regulation Authority and regulated by the Financial Conduct Authority and the Prudential Regulation Authority, subscribes to the Lending Code and the Financial Ombudsman Service, and is licensed by the Office of Fair Trading (No. 006110).

The Co-operative Bank p.l.c., P.O.Box 101, 1 Balloon Street, Manchester M60 4EP. Registered in England and Wales No. 990937. Calls to 0800 numbers are free from UK landlines. Calls from mobiles vary and you may want to check this with your service provider. Calls may be monitored or recorded for security and training purposes.

MKT12230 10/2013



The sole recommended supplier of ciders and beers to CIU clubs

BEST FOR BRANDS AND BUSINESS BACKING



SUPPORT: HEINEKEN Business Development Manager Steve Smith (left) will be working closely with Chandlers Ford Central Club Manager and Steward Andy Bowles to ensure the club gets all the support it needs to succeed

Founded in 1920, Chandlers Ford Central Club near Eastleigh in Hampshire boasts 1,300 members and is the latest club to sign up to trade with HEINEKEN.

According to Club Secretary Ray Berry, after five years with another supplier, the Committee felt it

was time for a change and approached seven alternative companies.

“We weren’t really getting the standard of service we thought was appropriate so we invited each company to come in and pitch for the business. It was clear that as well as having market-leading products in every brand



CHEERS! Secretary Ray Berry (left) is delighted to have signed up to trade with HEINEKEN after Business Development Manager Steve Smith’s winning business pitch

category, HEINEKEN was able to give us a number of added extras in the form of business support, club sector knowledge, promotions and merchandising materials like glassware alongside fair and competitive pricing, so we negotiated our deal and signed up last month.

“Our members enjoy a range of activities and we have snooker, darts, billiards, pool, crib and dominoes teams playing throughout the week. We also have discos, live entertainment, dinner dances, senior citizens outings, bingo and quiz nights which are all well-attended.

“Our HEINEKEN Business Development



DEAL: Club Secretary Ray Berry and HEINEKEN Business Development Manager Steve Smith look forward to a successful future



PERFECTION: The correct use of the Poutal system ensures every pint is poured and served perfectly

Manager Steve Smith will be supporting our Charity Family Fun Day on Sunday August 24 in aid of the Hampshire & Isle of Wight Air Ambulance and MacMillan Nurses and we are also talking about running some of the various brand-backed theme nights the company can offer as part of the package.

“While our members are very happy with the change of products on the bar and we have had no complaints, Steve is also organising a sampling night to introduce us to more of the company’s brands to see if we want to stock them.

“We very much look forward to building a close working relationship with HEINEKEN in the future as we are convinced they are the supplier that can deliver the most and has the best understanding of the problems facing clubs and how to combat them through innovation and expertise.”



BEST-SELLERS: Technicians Adam Barker (left) and Andy Singleton install the new taps and pipes for HEINEKEN’s market-leading cider and lager brands



If you would like to know more about what HEINEKEN has to offer your club, just pick up the phone and call National Account Manager **Graeme Nicholson** on **07810 756869** or email **graeme.nicholson@heineken.co.uk**

Walsall clubs learn to Get Smart and save thousands



Beechdale Social Club Secretary Sue Ball and President Malcolm Foster.

A club in the West Midlands is set to save thousands of pounds by installing three separate award-winning energy-efficient products from the Union's recommended energy suppliers Smart Energy. Wynn Davies, the Secretary of Aldridge Social Club in Walsall, was one of the first secretaries in the area to realise how much money could be saved by modernising clubs' energy systems.

Back in February he and the club's Committee were looking for a way to reduce their cellar costs as their system was old, very inefficient and expensive to run. Smart Energy advised the club to upgrade their unit and install their Free Air cellar system, which in winter uses the cold air outside to help cool the cellar. This reduces costs for the coldest six months of the year, and means the club only has to use its cellar cooler for the remaining half minimising breakdown and maintenance costs.

The Committee then changed their old gas boiler and convector heaters, which were costing £10,500 a year and took hours to warm the whole club. They replaced them with Smart Energy's low watt panel heaters, which allow the club to heat individual rooms in just minutes instead of hours and to cut their heating bills by up to 75 per cent. On top of that the club stands to save another 10-12 per cent on all its electricity bills by installing the Smart Energy Voltage Optimiser System.

"By taking the plunge to invest in Get Smart and go green Aldridge Social will now reap the benefits for many years to come and provide a glowing example to many other clubs throughout the CIU," said Smart Energy Marketing and Commercial Manager Amy Alvarez (above).



Two other CIU clubs in Walsall have also installed the firm's energy-saving products. Sue Ball, the Secretary of Beechdale Social Club contacted Smart Energy to try to heat the club's lounge and bar in a more energy-efficient way. They were spending £4,000 per year on gas with a boiler system which was taking ages to heat up the rooms and even then was still struggling to keep members warm enough.

By installing low watt heating panels into both rooms the club will have instant heat and will potentially bring their bills down to around £1,250 per year, making their members happy at a fraction of the cost. Said Sue. "This is a no-brainer and we should have done this a long time ago."



Rushall Labour Club were one of the first clubs in the area to take advantage of Smart Energy's Free Air cellar system, and haven't looked back since. After installing a unit back in December to reduce the running costs of their expensive cellar system the Committee has now saved £1,207 in just six months.

Secretary Kevin Caddy (above) says: "The news that we're saving £200 per month on the club's electric bill has been gratefully received in these tough economic times."

"The Committee at Rushall Labour Club are so pleased it has given them the faith and trust in our products to now look at their heating," added Amy. "Just like Aldridge they will make bigger and better savings by changing their old systems for our award-winning heating panels."

"At Smart Energy there is nothing better for us than clubs in their local area talking to one another about the sound advice and help that we can offer to clubs in these tough times to keep on surviving and remain open for their community. A lot of clubs have such high energy bills and just don't know where to start but as your approved National Account supplier we can lend a hand to point you in the right direction.

"We can now even provide your club with green energy funding at very low rates and our smaller products such as the free air cellar system and the voltage optimiser can be purchased with two years' interest-free credit so there is no outlay to the club and it can simply be paid back from the savings – so again it's a no-brainer all round."

NATIONAL ACCOUNTS



GET SMART, with your energy bills.

LOOK AT THE SAVINGS

Heating
Replacing your old boiler or heating system can **SAVE** upto **70%**

Beer Cooling
You don't have to change the cooler to **SAVE** upto **65%**

Find out how hundreds of clubs have already made massive savings. Be smart, it costs nothing to find out how you can reduce your energy bills.

Approved suppliers to the **CIU**

call us on free phone **0800 0730041**
or email at **info@smartenergyprojects.co.uk**

Green Funding and Interest Free Packages Are Now Available

Make sure you're properly covered



Andy Kitchener with CIU Vice-President John Tobin at last year's CIU Beer & Trades Exhibition.

One of my main concerns is that many social clubs do not have the necessary type of cover in place to ensure that in the event of any unforeseen circumstances their business is adequately protected.

Did you know:

- Employers Liability Insurance, which covers you if an employee is injured or hurt during their day-to-day role, is a legal requirement and forms part of UK legislation
- Committees always assume the responsibility for the safety of their members and guests which leads to a requirement for Public Liability Insurance
- Secretaries and Committee members could ultimately be held personally accountable for a lack of adequate insurance cover leading to personal financial and even criminal action.

What are the risks of not having any cover?

The consequences of not having any Employers' Liability cover are that you are breaking the law and could be subject to a fine. A lack of Public Liability Insurance could open your club up to very expensive claims in the event of negligence within your premises. On top of all this any expenses

incurred, that would have been covered by an insurance policy, will subsequently have to be settled from your own funds.

What is underinsurance and what are the risks?

Underinsurance is where you take out a policy but for a value less than the item or risk that you are wishing to cover. If you are underinsured by say 50%, the insurer will only settle at 50% of the sum specified or could ultimately decide that the claim is repudiated and no settlement is made.

For further information on the issues covered by this article, please contact Aon on 0845 527 0709 or visit insurance.aon.co.uk/business/insurance/hospitality-trade/social-club-and-ciu-insurance.



By Andy Kitchener
Aon
Relationship
Manager for
CIU

Aon UK Limited is authorised and regulated by the Financial Services Authority. Aon UK Limited Registered Office: 8 Devonshire Square, London EC2M 4PL. Registered No 210725. FP.ENT.275.CM **Calls may be recorded or monitored for training purposes.



Licensed Trade Insurance



Your Club, Your Insurance

Walkers Crisps and Snacks

Why Walkers?

- Free display equipment
- Expert Advice
- Complete range of crisps, snacks and nuts

If you would like to arrange a delivery of Walkers please call 01189 032699

WALKERS and the WALKERS logo are registered trademarks © 2013. MONSTER MUNCH & DEEP RIDGED are registered trademarks © 2013. NOBBY'S and the NOBBY'S NUTS logo are registered trademarks © 2013.

With cover from as little as £795* for your clubs insurance why not speak to one of us today

Insurance for CIU clubs

Speak to one our Client Managers today **0845 287 2539**

licensedtrades.aon.co.uk

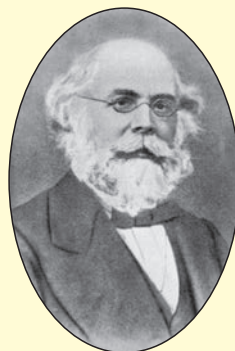
Your Club, Your Insurance

*Price illustration is based on cover being provided for the following: Employee Liability at £10 million, Public Liability at 2 Million, Business Interruption at £125,000 for an indemnity period of 12 months, Loss of licence at £100,000, Book Debts at £25,000, Contents at £14,500, Theft by employees at £5,000, Portable property at £5,000, Computers at £3,000, Money up to £3,000, Stock covered at £3,000, Goods in transit at £3,000, Wines/Spirits/tobacco/cigarettes at £2,000 and Contents of the gaming machines at a £1,000. The indication provided is also based on the building being of standard construction, in an area that isn't subject to referral due to flood or subsidence and is subject to previous claims history. | Aon UK Limited is authorised and regulated by the Financial Conduct Authority. | Aon UK Limited Registered Office, 8 Devonshire Square, London EC2M 4PL Registered No. 210725 | FP.ENT.17.STB

SOLLY'S BRANCH



The Branch Executive pictured outside Bloxwich Memorial Club. Left to right: Alex Royle, Geoff Whewell, John Hope, Des Flood, Alan Goodwin, John Clarke and Tony Bartram. Inset: Vice-President Jack Haughey. Right: Jack Mann was Branch President and a member of the National Executive until his untimely death from cancer in 2000.



The West Midland Branch has been celebrating its centenary – but it could easily have been a 150th anniversary.

Before he stepped down as General Secretary in 1867 the Union's founder, the Rev. Henry Solly (right) briefly established a Branch in Wolverhampton, which would have made it the Union's first. It was not, however, until 1914 that the West Midland Branch as we know it was founded with a retired school teacher W.J. Williams as Secretary.

While London was at the heart of early club life, among the clubs that became members of the Union during Solly's first year in office in 1863 were West Bromwich WMC, Wednesbury WMC and Sedgley Workmen's Hall. Other clubs described as "being formed under the impulse and advice of the Union" but not affiliated were Birmingham and Wolverhampton while two clubs described as receiving advice or assistance were listed in Hereford and nearby Ledbury – both very much part of the Branch, despite its name. While it includes Birmingham, it has always been based in Lichfield Street, Walsall and there is no s in the Branch's name because it preceded the county of West Midlands by 60 years. The Branch includes clubs in Worcestershire, Shropshire and Herefordshire as well as West Midlands, and at one time there were even clubs from mid-Wales like the former Llanidloes United Services Club. There is a unique situation in Hereford itself with the Richmond Place Club being in West Midland Branch and the Hereford Welsh Club in Monmouthshire Branch – while parts of the West Midlands county around Coventry belong to the Warwickshire Branch.

Those to follow W.J. Williams as Branch Secretary included W.J. Galpin, Dick Harper, Oliver Cotterill, Colin Horton, Frank Collins and Ray Collins, before Geoff Whewell took on the job in 1998. Many characters have

NEW FOR 2014 - £400 maximum jackpot for club fruit machines!

Up to £2 stake – the higher the stake, the higher the payout.

NEW FOR 2014 a fantastic new product exclusive to Dransfields

Huge range of category B4 machines available for immediate delivery



B3A and pull-tab lottery machines are both exempt from MGD

UK's premier supplier of club gaming machines with the largest range including all popular titles.

- club gaming machines
- B3A machines
- pull-tab products
- multi-game quiz machines
- jukeboxes
- pool tables
- bingo and fundraising products

Make more money with Dransfields – your partners in profit. Give more choice to your customers.

GUARANTEED RAPID RESPONSE SERVICE FROM LOCAL ENGINEERS AT LOCAL DEPOTS – WHEREVER YOU ARE!



Dransfields
LOCAL SERVICE, NATIONAL STRENGTH
www.dransfields.com

Find out about a fantastic new product EXCLUSIVE to Dransfields!

Speak to your local Dransfields Account Manager today or call on the number below

Call Dransfields now on 0845 094 1495

Recommended supplier to the Club & Institute Union, Association of Conservative Clubs, National Union of Labour & Socialist Clubs, National Association of Railway Clubs.

CH REACHES 100 EVENTUALLY!

occupied seats on the Branch Executive including two members who were fairground bare-fist fighters of some note: Cliff Edwards of Gornal & Sedgley Labour Club and Denis Bonsor of Bushbury WMC, both of them sadly now fighting in a higher venue.

In 1998 the Branch Executive reorganised themselves by allocating clubs to each Executive member, who acted as liaison officers and, as the title suggests, liaised between the clubs in their area and the Branch on matters of concern to both.

For many years the Branch was represented on the National Executive Committee by its President Jack Mann, whose club was Essington WMC, and Syd Lovack of New Invention Victory WMC but when the number of clubs in the Branch fell below 200 the representation on the National Executive Committee fell to one person. In 2000 following Jack's untimely death from cancer at 62 Geoff Whewell won the seat on the NEC and he still represents the Branch.

Since becoming Branch Secretary in 1998 Geoff has worked with three Branch Presidents: Jack Mann, Ernie Nicks, who died aged 83 in 2012, shortly after stepping down as President, and presently Des Flood, the Deputy Head Teacher of a large secondary school in Birmingham. "He has introduced more modern thinking into our Branch which has undoubtedly increased our efficiency both in communication and our educational activities," said Geoff.

Many of the clubs in the Branch are very keen and successful at raising funds for worthy causes. One such club is Cheslyn Hay Community & Sports Club who over the past few months have raised thousands of pounds for the likes of the West Midlands Air Ambulance, Cancer Research, Macmillan Cancer Relief and the RBL poppy appeal. They also have a very active and successful bowls section.

Many will remember footballer Tom Galley, who played for Wolves and England. He lived in Cannock and was a member and frequent visitor of Cannock Social Club. Although he was an international footballer of note in times past, he had to travel on the bus with his boots in a plastic bag to all the matches. What a difference from today! Stirchley United WMC are another successful club who have contributed to this article. The club was formed in 1920 and moved to their present location in Hazelwell Lane, Stirchley. For some 13 years the club has been locked in negotiations with Tesco supermarket to relocate as they wish to build a new superstore on the grounds of the present club.



When former National Executive member Syd Lovack retired in 2007 the Branch took him and his wife Bette out for a meal where they were pictured in front of then Vice-President Steve Lees (left) and President Ernie Nicks.



The Branch celebrated its centenary with a cake, which Branch Secretary Geoff Whewell and Branch President Des Flood are pictured holding, along with those who attended a recent quarterly meeting at Longbridge Social Club.



Members of Chillington Sports & Social Club at their World War One themed charity night.

featured as our Club of the Month and the first CIU club to have its own website thanks to Club Secretary and computer genius Syd Arkless, who also devised the first online guide to the canal system. Yardley Wood Social Club have raised thousands of pounds over several years for the injured servicemen's charity Help for Heroes, handing over a cheque for more than £5,000 in 2010 alone while Chillington Sports & Social recently pre-empted this month's World War One centenary events with their own themed night, organised by member Keith Haynes, which included entertainer Digger Marandola singing wartime songs for the 150-strong crowd. The evening has raised more than £800 for the British Legion.

And it's a Legion Club that, in the words of Geoff Whewell, sums up the resilience and big-heartedness of the West Midlands. Wednesbury British Legion Club (below) looked like it had been hit by a tsunami when a lorry ploughed into it on Boxing Day. But two days later the club reopened and officials laid a wreath in memory of the lorry driver who had caused the destruction.



Picture: Express & Star Wolverhampton

To Derby via Epsom

It was Derby week in Epsom in more ways than one as three more teams booked a trip to the East Midlands for the final of the Dransfields/CIU National Quiz.

The South East heat at Epsom Common WMC was won by Ashford Road Club from Swindon with Surrey teams New Haw WMC and Ashted Village Club second and third. Teams from the host club came away with the consolation prize for finishing second last and the prize for the best-placed new team. And Maureen Mills (right) from the club's A team won a bottle of vodka with the closest guess to how many clients retiring Amsterdam prostitutes Martine and Louise Fokkens estimated they had served during their 50-year careers. The answer of 355,000 gives a new twist to having five a day!

The final heat took place at Lemington Social Club in Newcastle on Thursday, July 24 after this issue went to press. A report will appear in our September issue.

The final will be held at Alvaston & Crewton SC in Derby on the afternoon of Sunday, September 7, a change from the original date of August 31.



Paul Davies from co-sponsors The Co-operative Bank presents Maureen Mills with her spot prize.

Left: Kevin Ashman, Eric Kilby and Keith Andrew from Ashford Road Club are congratulated by South East Met Branch President Trevor Baker and Paul Davies.



WORKING MEN'S CLUB & INSTITUTE UNION LIMITED
253-254 Upper Street, Islington, London N1 1RY

CMD COURSE ENROLMENT FORM 2014/2015

Please complete in BLOCK CAPITALS

Mr/Mrs/Miss/ Forename:.....

Surname:.....

Private Address:

..... Post Code:.....

Daytime Tel No:

Email Address:

Name and Address of Club:

..... Post Code:.....

Associate Card Number:Date of issue:.....

Union Branch to which club is attached:

Occupation:

Position held in the club (if any):

Have you previously sat a CMD Examination? YES/NO If yes:

a) In what year? b) What was the result?.....

Are you/or have you previously enrolled for the CMD Course?

YES/NO (delete as applicable)

Date:Signature of applicant:.....

DECLARATION OF CLUB SECRETARY

The above applicant is a financial member of the Club and holds the Union Associate and Pass Cards

CLUB SECRETARY

PLEASE ENCLOSE A CHEQUE/POSTAL ORDER FOR THE AMOUNT OF £32.00 (CHEQUE MADE PAYABLE TO: 'CLUB & INSTITUTE UNION')

ALONG WITH YOUR COMPLETED ENROLMENT FORM

AND RETURN TO: CATH FITZPATRICK, EDUCATION ASSISTANT, CIU, 253 - 254 UPPER STREET, LONDON, N1 1RY

Closing date for applications is 6th October 2014



Working Men's Club & Institute Union Ltd

CLUB MANAGEMENT DIPLOMA COURSE 2014/2015

Do you want to be an efficient club official?

Enrol and be updated on various subjects in Club Law and Accountancy such as the 2003 Licensing Act and 2005 Gambling Act.

Exams take place each May and are optional but provide a good opportunity to enforce what you have learned over the course and to be rewarded for it.

Course begins on 13th October 2014

Enrolment fee - £32
(Covers all six distance learning lessons)

FINAL DATE FOR APPLICATIONS: 6TH OCTOBER 2014

Further information and enrolment forms available from the Leisure Department, Club & Institute Union Ltd, 253/254 Upper Street, Islington, London, N1 1RY

Tel: (020) 7226 0221; Fax: (020) 7354 1847
or visit our website: www.wmciu.org.uk

Stand up to HMRC



Dear Sir

I believe HMRC (Her Majesty's Revenue & Customs) are acting in bad faith over their reclaiming of the Linneweber VAT and it's time for an urgent appeal to the Government to quash all interest charges.

In a letter to clubs in 2011, HMRC said: "In the event that we ask you to pay the amounts charged by these assessments, you must do so within 30 days. If you do not we will raise an additional assessment charging interest on the unpaid amounts from the date of the repayment." Instead HMRC charged interest in the first instance rather than warning of interest to be added should payment be late. That is bad faith. HMRC have two rates of interest advertised on their website. There is a rate of 3% for late payment and 0.5% for repayments. This assessment is without question for repayment and therefore the interest calculation is six times higher than it should be. That is bad faith.

Furthermore the money paid to our clubs was paid by order of the court. It was therefore our clubs' money for all legal purposes until the higher court upheld the HMRC appeal. Surely the money could only have become due to HMRC at the date of the ruling. To request interest from the date of payment would appear to be showing gross contempt for the court that made the ruling to pay our clubs in the first place. That is bad faith.

The Union President and *Club Journal* have reported cases where HMRC has been totally unreasonable, even suggesting clubs take out a bank loan. Meanwhile large multi-nationals seem to be allowed to pay little or no tax. That is bad faith.

Is there anyone out there who will fight Big Brother? Badger your MP, write to the Prime Minister. We have to do something to stop this discrimination against us and our clubs.

Barry Slasberg
Kingsley Park WMC, Northampton

OBITUARIES

Mike Hutchinson MBE

A York clubman who received the MBE for his work in youth clubs has died at the age of 82.

Former railwayman Mike Hutchinson had been going into York RI since he was 17 and was a member of the club for 60 years. He was a member of the club's rugby union committee and played as a prop forward in the Yorkshire Cup Final in the 60s. He combined brains with brawn by representing the club in the York Quiz League and in the CIU National Quiz.

In 2006 Mike received the MBE for his work in youth clubs and as an organiser of the Duke of Edinburgh Award Scheme in the city. It meant he had two visits to Buckingham Palace in the same year as he was also invited to celebrate the 50th anniversary of the scheme.

Mike worked on the railways for 40 years and in his free time worked at youth groups in the city. He also ran an outdoor pursuits centre for young people so when the scheme first came to York in 1962 it was a natural move for him to start organising the endurance sections. Even in his 70s he was still taking groups out onto the North York Moors.

A widower, Mike leaves four children Andrew, Carol, Julie and Richard and condolences go to them and all his friends at the club.



Kenny Downes and Eddie Blakelock

Mill View Social Club in Sunderland regret to announce the death of former Chairman

Kenny Downes and serving

Committee member Eddie Blakelock, both at the age of 71.

A former shipyard worker, Kenny served on the Committee for five years. He leaves a wife, daughter and son.

Eddie, a taxi driver, had served on the Committee for two years and leaves a son and daughter.



Kenny Downes



Eddie Blakelock

Both were very staunch supporters of the club and will be sadly missed.

The club, which issues its own newsletter as well as having its own website, is staging a charity evening in Kenny's memory on Tuesday, August 5 in aid of the Northern Oesophago Gastric Cancer Fund at the Royal Victoria Infirmary in Newcastle.




Leading Manufacturer and Supplier of Quality Contract Furniture

Special discount for...
CIU members

New Catalogue available



Re-upholstery and refurbishment work also carried out

Call us for a...
FREE SITE SURVEY

St James Ind. Est., Corby, NN18 8AN
Freephone: 0800 0748320
www.acefurniture.uk.com



OFFICIAL JOURNAL OF THE CIU

253-254 Upper Street, LONDON N1 1RY.
Telephone: 020 7226 0221 • Fax: 020 7354 1847
email: info@wmciu.org • www.wmciu.org.uk
Personal subscriptions: £7.50 per year
Editor: Ken Roberts

Editorial Office: Powdene Publicity, Unit 17, St Peter's Wharf, NEWCASTLE NE6 1TZ.
Telephone: 0191 265 0040 • Fax: 0191 275 2609
News: Chris Brewis Email: cj@powdene.com
Advertising: Mike Lyon Email: info@powdene.com
Tel: 0191 488 7142

CLUB OUTINGS . . . CLUB OUTINGS

BLACKPOOL & LANCASHIRE

BLACKPOOL No. 1 WORKING MEN'S CLUB & INSTITUTE

9-17 Bloomfield Road, Blackpool FY1 6DH. Tel: (01253) 343 508
 Extends a warm welcome to all CIU associates and bona-fide guests.
 ★ FREE ENTERTAINMENT ★
 7 nights throughout the summer season (weekends winter).
 Change of artists nightly.
 Coach parties welcome.

CONTACT THE SECRETARY IN WRITING

BLACKPOOL ROYAL BRITISH LEGION CLUB

33-38 King Street, Blackpool FY1 3EJ.
 Enjoy your visit with us at the club.
 Good all-round entertainment.
 Bookings for coach parties accepted.
 Room available for hire.
 Sec: Mr K Teasdale or Treasurer Mrs R Thomas
 Club: (01253) 626 308; Office: (01253) 290 322
www.blackpoolrbl.co.uk
 email: blackpoolbritishlegion@gmail.com

You've been to the rest - now visit the best!

Voted the best club in the North West on TV's "The One Show".

BLOOMFIELD CLUB & INSTITUTE

128 Bloomfield Road, Blackpool FY1 6JW
 Free entertainment seven nights a week along with your favourite games
 • Bingo • Tote • Supa5.
 The club is on one level with disabled toilet facilities. Coach parties and football fans welcome.
Contact Secretary on (01253) 344583

KNOTT END WORKING MEN'S CLUB

Offers a great welcome to CIU members and parties. Why not try
 • a visit to the seaside • a ferry ride to Fleetwood
 • a bowling green competition
 or just our good food and entertainment.
 SALISBURY AVENUE, KNOTT END-ON-SEA, LANCS.
 Office telephone (01253) 810362
 Tel: Secretary Mrs Karen Bradford for dates and details
(01253) 812 226

ROSEGROVE UNITY Working Men's Club

Holme Lodge, Rossendale Road, Burnley, Lancs, BB11 5DL.
 Situated 2 minutes from Junction 9 on M65.
 Large car parking space available.
 Entertainment Friday, Saturday and Sunday.
 Bookings must give 14 days' notice.
 contact Secretary on 01282 431 363 or e-mail rosegrove20@gmail.com

GOING TO THE RACES?

Why not try
BURNLEY MINERS WMC
 As seen on TV
 2 minutes from the Town Centre and Turf Moor.
 Entertainment Friday, Saturday and Sunday.
 Coach parties by appointment.
 Breakfast and/or evening meal.
Tel: Bar (01282) 422 791 or Office (01282) 835 429

BRIGHTON & SUSSEX

Eastbourne & District Trade Union Club & Institute Ltd.

Clapham House, 48 Seaside, Eastbourne, East Sussex BN22 7QL.
 A warm welcome is guaranteed to all CIU associates and guests. A good selection of reasonably priced beers and spirits available. Temporary membership can be arranged at the door for all holiday makers. Large groups or coach parties are welcome with prior arrangements. Situated 5 minutes walk from the beach. Please contact secretary on (01323) 727703.

EASTBOURNE WORKING MEN'S CLUB

102/104 Firlie Road, Eastbourne BN22 8ET.
Tel: (01323) 723322
 Email: eastbournewmc@goolemail.com
www.ewmc.co.uk
 Visit the one and only workers' club in our lovely South Coast town. We have live music, raffles, bingo, darts, snooker and pool.
 See our website for coming events.
 A warm welcome to CIU members all year round.

Littlehampton Trades & Labour Club

Wick Street, Wick, Littlehampton BN17 7JH. Telephone (01903) 714 054
 A warm welcome awaits all visitors.
 Facilities include darts, crib and Sky TV.
 Catering for private parties can be arranged (14 days' notice please). Live entertainment every Saturday. Coach parties welcome with prior notice, please contact the Secretary.

ESSEX & EAST ANGLIA

COMRADES SPORTS & SOCIAL CLUB, CLACTON

A warm welcome awaits at both our premises. 205 Old Road, a short walk from seafront, has live entertainment Saturday evenings, disco Sunday afternoons, back garden and car park. 9 Colne Road is one minute from sea front. Live entertainment Tuesday, Thursday, Saturday afternoons and Saturday evenings. Pool, darts, raffles and bingo at both. Coach parties welcome by ringing the Secretary in advance on (01255) 423 314.

HUNSTANTON (NORFOLK) UNITED SERVICES SOCIAL CLUB

A warm welcome to all visitors. Large enclosed garden and car park with sea views. Three snooker tables, also pool table and darts. Bingo Mondays and Thursdays and one game Saturday evening. Live weekend entertainment. Catering arranged on request. Disabled friendly. Close to Sandringham Royal Estate, Coaches welcome midweek.
Contact Club Steward on (01485) 533360.

Naval & Military Club (Southend-on-Sea)

20 Royal Terrace, Southend SS1 1DU.
Tel: (01702) 347169
 A warm and friendly welcome awaits you. Large rear garden and roof terrace with fantastic views overlooking the seafront and estuary. Live entertainment Saturday nights and Wednesday afternoons. Hot and Cold Food available every day of the week. Local Real Ale Club of the Year. Coach parties welcome but must contact the Secretary/Chairman prior to the visit.

On the beautiful North Norfolk coast

SHERINGHAM TYNESIDE CLUB
 95 Station Road, Sheringham NR26 8RG
 Safe beer garden and parking.
 Great home-made food at great prices seven days a week. Coaches welcome, contact the Secretary in advance on
(01263) 822570

WALTON-ON-NAZE RBL CLUB

Vicarage Lane (off High Street)
Visiting the seaside?
 Our newly refurbished and refitted club extends a warm welcome and friendly atmosphere.
 Two minutes from beach front.

 Live entertainment at weekends/ Sing-a-long Thursday afternoons/ Large screen TVs/Pool/Darts

Good range of drinks and bar snacks available

 New memberships available.
 CIU and RBL affiliated coach parties welcome!
 Free finger buffet for 49-seater coach visit!
 Upgraded buffet at a discount.
Contact Secretary on (01255) 674153

HAMPSHIRE & ISLE OF WIGHT

Leigh Park and District TUWMC

439 Dunsbury Way, Havant PO9 5BD
The largest club on the South Coast
 Situated 2 miles from A3(M) and A27 and within 20 minutes' drive of Goodwood and Fontwell Races.
 Visiting clubs welcome. Live bands on Saturday nights and food, darts, snooker and pool available all week.
 Please contact the Secretary on (023) 92472624
 email: workingmens.ins@btconnect.com
 website: www.workingmensclubleighpark.co.uk.

Newport (I.W.) Social Club

13-14 Lower St James Street, Newport, Isle of Wight PO30 5HB. Tel: (01983) 527 291
 Situated in the centre of town, with a warm friendly atmosphere where you can bring family and friends. Open all day, function room, snooker room, darts, pool and jukebox. Kitchen now open 7 days a week for hot and cold food. Coach parties always welcome by prior arrangement.

COWES COMBINED SERVICES & SOCIAL CLUB

85 High Street, Cowes, Isle of Wight PO31 7AJ.
 A warm and friendly welcome is extended to all visitors.
 Situated on the sea front with panoramic sea views from the stage dining area, the club has one of the best views in the country. Ideal for parties and outings. Freshly prepared meals available 7 days a week. Disabled facilities. Coach parties very welcome, please notify Secretary or bar manager in advance. Entertainment Friday and Saturday evenings.
Tel: (01983) 292921 email: cowesscc@onwight.net

HEREFORD & WORCESTERSHIRE

Hereford Welsh Social Club

1 Hinton Road, Hereford, HR2 6BL.
Tel: (01432) 269038/285974.
 Email: herefordwelshclub@hotmail.co.uk
 A friendly welcome is extended to all Associate Members. Live Entertainment every Saturday evening.
 Hot and cold food available. Coaches welcome (please contact Secretary prior to your visit).
 Please visit our website:
www.herefordwelshsocialclub.co.uk
"Hereford's most popular social club"

RICHMOND PLACE CLUB

69/71 EDGAR STREET, HEREFORD HR4 9JP
 Live entertainment every Saturday. Monthly Country & Western night. Hot and cold food available. Disabled facilities, real ale, Wrestling nights. Football supporters, shoppers and coach parties very welcome. Parking for coaches.
 Contact Secretary, Les Walker on (01432) 356 529.
 email: richmondclubsecretary@btconnect.com

KENT

BEXLEYHEATH WMC

Royal Oak Road, Bexleyheath. DA6 7HG
 Telephone (0208) 303 2163
 Friendly atmosphere, comfortable surroundings and an excellent range of beers to quench your thirst. Everything you require on your visit to Bluewater and Lakeside shopping centres.
 Refreshments available.
 (Please give advance notice).

SUNDRIDGE PARK WMC

134 BURNT ASH LANE, BROMLEY.
 Tel: (020) 8464 3638 (Office); (020) 8460 6348 (Club)
 Located close to A21 and A20. A warm welcome is extended to all visitors. Two bars serving a wide range of drinks. TV in bar and the lounge. Purpose-built snooker room with four tables. Live entertainment Saturday and Sunday evenings. Coach parties by prior arrangement with the office.

LEEDS & WEST YORKSHIRE

Belle Isle WMC

Belle Isle Road, Leeds LS10 3PE.
 Warm and friendly club with large car park, good value beer and large concert room. Live bands Friday, Saturday and Sunday. Coaches welcome.
Contact Secretary on (0113) 2718 768.

Visiting Blackpool or Yorkshire Coast? Haydock Park or York Races?

Then call at: Elland Working Men's Club Roseberry Street, Elland, West Yorkshire HX5 0HT
 For your breakfast on the outward journey. And for an evening's splendid entertainment on your way home. We are only 2 miles from Junction 24, M62 on the A629. A warm welcome extended to all Associate Members. Live entertainment on Saturday and Sunday evenings. Dancing on Thursdays to our resident organist. Fully modernised Concert Room and Lounge. Excellent Games Room. Floodlit Bowling Green. Large Car Park. Coach Parties welcome - please let us have
 14 days' notice in writing to the Secretary Steve Graydon. Tel: Club (01422) 373 023.
www.ellandwmc.web.com
 Telephone pre-bookings to be confirmed in writing to the Secretary.

SWARCLIFFE WORKING MEN'S CLUB

Swarcliffe Avenue, Leeds LS14 5DE
 A warm and friendly welcome always assured in the comfortable surroundings of our recently refurbished club. Live entertainment every Friday, Saturday and Sunday evening. Relax in the quiet of the lounge or try a game of snooker on one of our three superb tables.
 Big screen Sky Sports TV.
Planning a day at the races?
 York, Wetherby, Ripon.
 We are 2 minutes from the A64 and 5 minutes from the M1. Breakfast and evening meals for large parties available by appointment.
 Contact: Glen Doyle (Secretary)
(0113) 2959100

LEICESTER & EAST MIDLANDS

Nottingham Oddfellows Club

89 Humberstone GATE, Leicester.
 TELEPHONE: (0116) 262 0181
 262 5404 (Evenings) - CIU Affiliated
 ★ City Centre Club
 ★ Coach park right outside premises
 ★ 2 minutes from centre of Leicester
 Coach parties and parties always welcome. Food supplied hot or cold - 7 days' notice or please phone prior to visit. Children welcome. Dances Monday, Tuesday and Friday.
 Entertainment available.
 Phone or write to Secretary Eric Johnson

SAFFRON LANE ESTATE WMC

429 SAFFRON LANE, LEICESTER, LE2 6UF
 Welcomes all CIU members to our friendly club here in Leicester. Only 5 minutes from the M1 junction 21 and close to the racecourse and the football, rugby and cricket stadiums.
 Clean, comfortable and fully air-conditioned.
 Please visit our website where you will find details of all our facilities and activities.
www.saffronlanewmc.co.uk

KEGNESS EX-SERVICE CLUB

2 Grand Parade, Skegness, PE25 2UN.
Telephone: (01754) 762113
 Located on the seafront near the clocktower, 2-3 mins from town centre. Lounge bar, pool/children's room, 1st floor patio area. Reasonably priced beers/lagers and house doubles. Selection of chilled bars. Live entertainment every Saturday (Sundays main season). Open 11.30-11.30 most days. Pre-booked coaches welcome - come to a completely refurbished 21st century club.

CLUB OUTINGS . . . CLUB OUTINGS

LONDON

BLACKHEATH NEWBRIDGE SOCIAL CLUB

22 Charlton Road, Blackheath, London SE3 7HG
A warm and friendly welcome awaits you in this South East London club situated close to the O2, historic Greenwich and the River Thames with boat trips to Central London and the sights.
Children welcome. Coach parties by prior arrangement, refreshments available upon request. Various entertainment. Ask for details from the Secretary on (020) 8858 6776 or email blackheathwmc@btconnect.com

THE HAMMERSMITH CLUB

Rutland Grove, London W6 9DH
10 mins' walk from Fulham FC and less than 25 mins by local transport to Chelsea and QPR. A warm and friendly welcome to away fans looking for good hospitality and a relaxing drink.
Also 20 mins to Westfield, Europe's largest shopping centre and 30 mins to West End theatres.
Contact Thomas on 07914 868272 or visit www.hammersmithclub.net

HARROW ROYAL BRITISH LEGION

Northolt Road, South Harrow HA2 0DW.
Extends a warm welcome to all Associate members and guests. Situated 10 minutes from the A40 and 20 minutes from Wembley Stadium. We have live bands every Saturday and Sunday night. Catering on request. Coach parties welcome with prior notification to Kath or Roy Roberts. Telephone: (020) 8422 1222.

Hayes WMC

Pump Lane, Hayes, Middlesex UB3 3NB.
Telephone: (020) 8573 1721
e-mail: bobdaybell@aol.com

Why not visit the flagship of clubs in the South? Ascot, Kempton Park & Sandown racecourses all nearby. Live bands every Friday and Saturday night. Late night cabaret last Saturday of every month, at least 3 acts, charge for entry, late bar. Catering available weekends, orders taken in advance to your requirements. Visit our website: www.hayesworkingmensclub.com for our full entertainment programme. Coaches welcome by prior arrangement with the secretary.

ISLEWORTH CLUB

Goodenough House, 109 St John's Road, Isleworth, Middlesex TW7 6PN. Telephone: (020) 8560 2569
We are good enough - are you?
5 minutes from Twickenham Rugby and only 15 minutes from Kempton and Sandown. Call in on your way and give us a try. Pick your winners from our varied selection of popular beers which are available in either our large Concert Room or Lounge. Close to the M4 and M3. Please give prior notice for parties. Coach parties are welcome.

NORTHAMPTONSHIRE & CAMBRIDGESHIRE

St James Working Mens Club

Weedon Road, St James, Northampton.
A warm welcome awaits all club members. Lounge, Games Room and large Concert Room. Parties welcome, catering if required by prior arrangement. 5 minutes M1, Junction 15A. Please contact Secretary Mrs P. Webster. Tel: (01604) 456 602 www.stjameswmc.co.uk

SHEFFIELD & SOUTH YORKSHIRE

ARMTHORPE CORONATION CLUB

Tranmoor Lane, Armthorpe, Doncaster DN3 3BS.
Handy for racecourse and Doncaster Rovers. Close to M18. Big screen TV, entertainment every weekend.
Ring Club Secretary Alan Jones on (01302) 831 393

Arundel Ex-Servicemen's Club

City Road, Sheffield
A friendly Club close to Town Centre Facilities include a 500 seat Concert Room, two other lounges and a Games Room. Great Cabaret every night except Tuesday and Wednesday. Coach parties please contact Mr B. Simmonite. Children allowed up to 10 years Catering for Buffet if required.
Telephone: (0114) 239 7151

CARCROFT VILLAGE WMC

Chestnut Avenue Carcroft, Doncaster DN6 8AG
Extends a warm welcome to all CIU affiliated members. Coach Parties welcomed by prior arrangement. 1 mile from A1 and close to M1, M18 and M62. Top class entertainment every weekend. Handy for Doncaster Races and trips returning from North or South coastal routes. Big screen TVs and live football. All enquiries to Jim Hutchinson, Secretary on (01302) 725497; email secretary@carcroftvillagewmc.com, website www.carcroftvillagewmc.com

Hawthorn Recreational & Social Club

Goodison Boulevard, Cantley, Doncaster. Tel: (01302) 535 995
Easily accessible for the Racecourse.
Big screen Sky TV.
Artistes on Saturdays.

INTAKE SOCIAL CLUB

Craithie Road, Doncaster DN2 5EG.
We are the closest club (5 minutes' walk) to Doncaster Racecourse. (See Page 19 for offers). Bar snacks available. Tremendous value-for-money bar prices.
Contact Secretary Tom Forester in advance on: (01302) 320 036 or email intakesocialclub@yahoo.co.uk

SURREY

EGHAM UNITED SERVICES CLUB

111 Spring Rise, Egham, Surrey TW20 9PE.
"North Surrey CAMRA Club of the Year 2008 & 2009"
"Finalist for CAMRA Club of the Year 2009"
Located 5 minutes from J13 M25, handy for Windsor Castle and races, Kempton, Ascot, Epsom and Sandown. 5 mins from Egham Station on the Waterloo to Reading line. Three real ale and cider festivals a year. www.eusc.co.uk
Tel: (01784) 435120 or (07738) 714572 (Real Ale Festivals and Party Bars also arranged)

DAY OUT RACING ESHER W.M.C.

142 Esher High Street, Esher, Surrey.
Telephone: (01372) 467 758
Sandown Race Course within walking distance. Kempton Park and Epsom also nearby.
A warm welcome is extended to all associate members.

THAMES VALLEY

Banbury Trades & Labour Club

32 West Bar Street, Banbury, Oxon OX16 9RR.
Tel: (01295) 215 7119 (H); (01295) 254 168 (Club).
A warm welcome is extended to all Associates. Coach parties welcome with 14 days prior notice to Secretary Joan Conley. Live entertainment on Saturday night. Food available. Please contact Secretary with your booking.

WALES

CARDIFF WEST END SOCIAL CLUB

COWBRIDGE ROAD WEST, ELY, CARDIFF CF5 5BY.
A very friendly welcome to CIU Associates and their families from CARDIFF'S PREMIER SOCIAL CLUB.
10 minutes from M4.
15 minutes to city centre.
Millennium Stadium, Cardiff International Arena, St. David's Hall/Centre, Cardiff Bay.
Live entertainment every Saturday Night with Bingo/Raffle/Tote/Disco
FULL SKY SPORTS/RACING UK
Hot and cold food available.
COACH PARTIES MOST WELCOME.
Telephone: (029) 2059 4004

Bettws Social Club

Lambourne Way, Bettws, Newport, Gwent.
A warm friendly welcome assured to all CIU affiliated members and guests.
Less than 10 minutes from junction 26 of the M4. Coach parties welcome by prior appointment. Live entertainment every Saturday evening. Catering can be provided by arrangement. Tel: (01633) 858 780.

Going to Premiership Swansea City or racing at Ffos Las? Visit MORRISTON WMC

11 Slate Street, Swansea SA6 8AA.
A friendly club which makes visitors welcome.
Liberty Stadium 15 minutes, Ffos Las 45 minutes, Ospreys 15 minutes. 10 minutes from M4 Junction 45.
Coach parties welcome with advance notice.
Ring (01792) 771580

Rogerstone and Bassaleg Social Club

1 Tregwilym Road, Rogerstone, Newport NP10 9DW.
A warm friendly welcome assured to all CIU affiliates and guests, less than 10 minutes from junction 27 of the M4. Coach parties welcome by prior appointment, live entertainment every Saturday evening.
Telephone: (01633) 893 508.

WARWICKSHIRE & COVENTRY

BEDWORTH EX-SERVICEMEN'S SOCIAL CLUB & INSTITUTE

Rye Piece, Bedworth, Nr. Nuneaton, Warwickshire. Tel: (024) 7631 3236
Extends a warm welcome to all associates. Restaurant facilities Monday to Saturday - Bar snacks also available. 6 minutes from junction 3 of M6. Approx. 5 miles to Coventry City. Saturday/Sunday night entertainment, live music, bingo, bar and lounge. Contact Secretary for bookings.

Willenhall Social Club

Robin Hood Road, Coventry
CV3 3BB. Secretary:
(024) 7630 1222 or 7630 3278.
Welcome to all Associate Members. Entertainment every Saturday and Sunday night in concert room (seats 600). Bar, games room and luxury lounge facilities. Large car park. Hot and cold snacks available.
10 minutes from City Centre.
No Children Allowed.
Coach parties apply to Secretary.

HEN LANE SOCIAL CLUB

Beacon Road, Holbrooks, Coventry CV6 4DS.
5 minutes from M6 Junction 3, 10 minutes' walk from Ricoh Arena, minibus from club on match days. Excellent function room and facilities. Hot and cold snacks available at all times. Prior notice required for coach parties and catering (menu sent on request).
Please contact the Secretary.
Tel: (024) 7672 4830; Office: (024) 7672 4832.

WEST COUNTRY

THE ANZAC CLUB

Anzac Street, Dartmouth, Devon TQ6 9DJ
(01803) 832661
A warm and friendly welcome awaits all affiliated members and guests.
Coach parties welcome, please give 14 days' prior notice. Catering for buffets can be arranged. Situated behind St Saviour's Church.
Please like us on Facebook.

Pool Labour Club

22 Wimborne Road, Poole, Dorset
Tel: (01202) 674 059 / 686 256
Offers the 3 S's to all affiliated members, Sea, Sand and Speedway! Centre of Poole, 20 minutes from Bournemouth, 2 minutes from Poole Stadium for Speedway and Greyhound Racing. Good beer, warm welcome, open all day. Entertainment on Saturday nights, Tuesday Tea Dances. Darts, Skittles, Snooker, Pool and Dominoes games can be arranged. Certain restrictions apply to children.
Contact Secretary for details.

WESTON-SUPER-MARE WMC

Orchard Street, Weston-super-Mare.
Telephone: (01934) 418 202
A warm welcome is extended to Associates and their families in Weston's premier club. Situated in the town centre and close to the sea front.
Live entertainment every Saturday and Sunday evening, Sunday, Tuesday and Wednesday afternoon
Bingo (Friday, Saturday and Sunday).
Buffets arranged.
Large downstairs concert room seating 250. Coach parties welcome including a Saturday.
Please contact the Secretary giving prior notice of visit. Open all day.

WEYMOUTH WMC

MITCHELL STREET, WEYMOUTH, (Harbour End Of Town)
Less than 5 minutes from the beach!
We welcome all CIU affiliated members. Music Friday & Saturday evenings, with Bingo fliers on these nights. Plus the usual club activities.
Restaurant now open.
Tel: (01305) 786 392 or (01305) 787254
www.weymouthworkies.co.uk

WEST MIDLANDS & BIRMINGHAM

REMEMBRANCE CLUB LTD.

10 CHESTER ROAD, CASTLE BROMWICH, BIRMINGHAM B36 9DD
Extends a warm welcome to all Associate Members. Live entertainment every Saturday and Sunday evening. Line Dancing Mondays. Ballroom Dancing Tuesdays. Large comfortable lounge. Games Room. Ample parking. Close to M6/M42 (nr. Spaghetti Junction). Coaches by arrangement. Contact the Secretary. (0121) 747 5256 / 747 2943

Yardley Wood Social Club

118 School Road, Yardley Wood, Birmingham B14 4JR.
Club Tel: (0121) 474 2026 Sec: (0121) 474 3725
Visit our brand new website: <http://www.yardleywoodsclub.com/>
Two large TV screens, 6 snooker tables, bingo and weekly entertainment, bowling green. Function rooms available for hire and catering. Large car park at rear of the club. Associate members welcome.

YORKS (N & E) & NORTH EAST

BEECHWOOD, EASTERSIDE & DISTRICT SOCIAL CLUB

Broadwell Road, Easterside, Middlesbrough TS4 3PP.
(Opposite The James Cook University Hospital)
Live music every night with bingo, totes and raffles. Large bar with 4 snooker and 2 pool tables, 2 dart boards and all Sky sports channels. Two smoking areas with heated Beach Huts. Coach parties welcome with prior notice to The Secretary. Tel: (01642) 318789. Check the website it's all on there, www.beadsclub.co.uk

Going to watch Sunderland or Newcastle United? Visit

BELMONT CLUB & INSTITUTE
Grange Road, Carrville, Durham DH1 1AJ
Friendly club. Football and other sports supporters welcome. Large screen TVs.
Coach parties by arrangement.
Tel: (0191) 386 1487

BLAKELAW & DISTRICT SOCIAL CLUB

6 Cragston Way, Newcastle NE5 3SW.
Friendly club on northern edge of Newcastle. Handy for A1, Racecourse and St James' Park. Coach parties welcome.
Food can also be arranged.
Contact Secretary Alan Campbell on (07986) 706354 or blakelawsc@googlemail.com

CLUB OUTINGS . . . CLUB OUTINGS

CENTRAL WMC

7 Beaumont Street, Darlington
Tel: (01325) 464054
Situating near town centre, five minutes from A1(M). Associate members and coach parties are welcome as are football and racing followers.
Please give prior notice.
Live entertainment and catering by private arrangement. Room available for birthdays, engagement parties, wakes and weddings.

CHILTON & WINDLESTONE WMC

Darlington Road, Chilton, Co. Durham DL17 0EY
Great facilities in our modern bar, lounge and concert hall.
Sky Sports - Snooker - Pool - Regular Entertainment
Convenient for M/bro, S/land, N/cle football matches.
Only 3 miles from A1(M).
5 miles from Sedgfield Racecourse
For bookings contact the Secretary on 07789 003529 or email via our website at www.chiltonwmc.co.uk
Situating on the main road in Chilton - look for the flagpole!

Going to watch Sunderland or Newcastle United?

Then visit HETTON VICTORY CLUB

10 Richard Street, Hetton-le-Hole DH5 9HN
Friendly club welcoming all visiting football supporters. Cheap beers and spirits, six large TV screens, short journey to both grounds.
Snacks supplied, coach parties welcome with prior notification to the secretary Ian Wilson on 07799233319 or email: wls901@aol.com

Middlesbrough RAOB Club (The Buffs)

51 Wilton Street, Southfield Road, Town Centre
A19-A66 2 minutes. Redcar races, 10 minutes.
Middlesbrough FC 5 minutes. Games Room, TV Lounge and Lounge. Live entertainment Saturday and Sunday.
Disco Wednesday and Friday. 50/50 Dancing Tuesday and Thursday. A warm welcome to all affiliated members including coach parties with prior notice to the Secretary. Telephone: (01642) 860 511.

New York Club & Institute Limited

22-26 Blossom Street, York YO24 1AJ.
Tel: (01904) 612 244 newyorkclub@btconnect.com
300 yards from station on way to racecourse.
Warm and friendly welcome to all Associate Members and guests. A great place to call into before or after your visit to York.
Beer garden and 42" screen with Sky TV. Parties and buffet-style catering by prior arrangement.

OSBORNE WMC

Osborne Road, Chester-le-Street, County Durham DH3 3DS.
200 yards from the station and short walk to the Riverside Cricket Ground. Evening car and coach parking facilities. Live entertainment every Saturday night. A great place to call in after your day at the races. Bingo Mondays and Fridays.
Just give us a ring on (0191) 388 8679.

POPPLETON ROAD WMC

132 Poppleton Road, York YO26 4UP
(01904) 793398
A warm friendly welcome assured to all CIU affiliates and guests. Wide selection of beers available, ideal for the races and close to the city centre. Bingo and raffle Fridays. Live entertainment and bingo, Saturdays and Sundays.

King Street Social Club

Phoenix House, 27 King Street, North Shields NE30 1BZ.
Telephone: (0191) 2900473.

Situating on the main road from North Shields to the coast. Main bingo sessions are Tuesday and Friday evenings and Sunday morning.
Top class live entertainment every weekend supported by resident band "Soul Machine".

Coach parties welcome with prior notification to the Secretary David Farrell. Telephone (0191) 2900474.

North Biddick Social Club

Bonemill Lane, Fatfield, Washington NE38 8AN.
Excellent riverside location. Five minutes from A1(M) with excellent car/coach parking facilities. Games room with 2 snooker tables and 2 pool tables. Restaurant facilities and buffets catered for. Why not call on your way to see football games or cricket games in the area? Coaches welcome by prior arrangement with Secretary Michael Normile on

(0191) 416 0148

Why not visit our website at www.northbiddickclub.co.uk

VICTORIA SAILORS & WMC

3 Cliff Street, Bridlington YO15 2NJ
Tel: 01262 605093
Warm & friendly welcome offered to all C.I.U members, affiliated members & guests. Situating town centre, 200 metres from the beach and harbour. 2 snooker tables, pool, darts, cards and dominos. Fully functional kitchen open 7 days a week. Bingo 4 nights a week and live entertainment every Saturday. All Coach parties welcome with prior arrangements, contact Derek or Jacky for more information.

City of York Tramways Employees'

- Club and Institute -
1 Mill Street (off Piccadilly), York YO1 1PY.
5 minutes from town centre
Entertainments Fridays, Saturdays and Sundays.
Prize games. Concert room (seating 275), Games Room, Bar and live Sky Sports TV. Visiting Associates are welcome. Parties by arrangement.
Telephone: (01904) 623 953.

Northallerton & District WMC

Elder Road, Northallerton, DL6 1NH.
Tel: (01609) 772390
Email: Northallertonwmc@hotmail.co.uk
Situating in the picturesque county town of North Yorkshire, with easy access to A19 and the A1, we extend a warm welcome to CIU associates. Only 15 mins from Catterick, Ripon and Thirsk racecourses. Racing and football channels showing on four TVs. Live entertainment and bingo Saturdays and Sundays.

To advertise contact
Chris Brewis
on (0191) 265 0040 or email: cj@powdene.com



Branch Executive 10-Year Award

Michael Bott, South East Midlands

Distinguished Service Award

Richard Bullock, Cheylesmore Social Club, Warwickshire
Alan Ebdon, Newton Aycliffe WMC, Durham

Long Service Awards

George Tindall, Bridlington Vic Sailors Club, York
Terence Newbigin, Killingworth Township SC, Northumberland
Brian Hanley, Up Holland Labour Club, Manchester
Terry Channell, Totton Recreation Club, Wessex
Terrence Cooper, Totton Recreation Club, Wessex
Hugh Jones, Chilton & Windlestone Club, Durham
Leslie George, Blackhill & Dist Comrades, Durham
Kevin Gibson, Siddal Cricket & Athletic Club, West Yorkshire

Certificate of Merit

David Gosling, Cheylesmore Social Club, Warwickshire
Eric Oughton, Cheylesmore Social Club, Warwickshire
Colin McIntyre, Westfield Social Club, Northumberland
William Hedley, Shiremoor WM Club, Northumberland
David Reay, Killingworth Township SC, Northumberland
Gordon Strong, Totton Recreation Club, Wessex
David Cawte, Crofton (Hants) Club, Wessex
Ross Gordon, Ryde Town Club, Wessex
Henry Wardle, Newton Aycliffe WMC, Durham
Joan Craven, Hove Edge Bowling WMC, West Yorkshire

CLUB NOTICES

Expulsions

Mr Michael Callipolites, High Howdon Social, Wallsend, North Tyneside
David Jones, Mountain Ash Hibernian Club, South Wales
Dennis Johnson, The Welcome Club, Stanford-le-Hope, Essex
Rob McBride, West Worthing WMC, Sussex.

Has your club a historic interior?

If your club has a historic interior then it's time to shout about it. We at *Club Journal* would love to hear about it and feature it, as would CAMRA, who now they have successfully revived England's national drink - traditional cask conditioned ale - hope to follow up their successful books on historic pub interiors with one on clubs.

"There are some fantastic clubs all over the UK and we want to find the ones with the best preserved interiors", said John Holland, the Chair of CAMRA's Clubs Committee. "We're looking either for those in buildings which are of historic interest or which have remained unaltered since their construction - even if that was as recently as 1971.

"We are always on the look-out for clubs which serve excellent real ale, but this initiative is about more than beer, it is about discovering the hidden gems around the UK and helping preserve them for the future."

This fantastic interior belongs to the Sorrento Workers Club where Durham Branch Executive member David Walton is pictured enjoying a sit down on a trip to Italy. The club is owned by the church and shared with the opera society but they agreed that men could



meet there every day to read, play cards, smoke and drink bottled beer. Subscriptions cost between five and 10 euros annually and go towards the upkeep of the building.

CLASSIFIED ADVERTISING

ALTHOUGH the CIU has taken care to ensure that all advertisements are placed in good faith it accepts no liability for any advertisements in *Club Journal*.

To place an advertisement in *Club Journal* contact

Mike Lyon on (0191) 488 7142

or write to *Club Journal*, Unit 17, St Peter's Wharf, Newcastle NE6 1TZ.
Fax: (0191) 275 2609. email: info@powdene.com

STYLE SEATING
Hospitality Furniture Manufacturers

Uk Manufactured Furniture

£38.95

FROM £17.95

Bench Seating from £180 per meter

Call for FREE brochure
tel: 01945 580099 www.styleseating.co.uk

Trent Pottery & Furniture

BQ/2 Available in gold, black or silver frame in any fabric C shown below. From £13.50

BQ/7 Gold frame in any fabric C shown below. From £23.30

BQ/1 Available in gold, black or silver frame in any fabric C shown below. From £12.40

BQ/5 Gold or silver frame in any fabric C shown below. From £23.30

150C 151C 152C 153C 154C

Email: sales@pubfurnitureuk.co.uk Web: www.trentpottery.co.uk
Tel: 0116 2864911 Fax: 0116 2869030

BUY YOUR OWN COPY. . . and pay less

Here's your chance to have your own personal copy of *Club Journal* for less than you'd pay for it at the club.

Fill in this form to obtain a year's supply of *Club Journal* for £7.50. This means that not only will we send you your copy post-free to your home if you wish, but two of the 12 editions will be yours for FREE.

Please send me a year's supply of *Club Journal*. I enclose a cheque for £7.50 made payable to the Club & Institute Union.

Name:

Home Address:

Postcode:.....

Please send your order to *Club Journal*,
Unit 17, St Peter's Wharf, Newcastle upon Tyne NE6 1TZ.

PRIZE CROSSWORD

Every month we give five £10 prizes to a lucky five correct entrants.

ACROSS

- Marine teams said to make your sea get away. (6)
- Portal, designed to back me, in time. (8)
- All the more reason for a fair Rio to be discovered. (1,8)
- Implant East Midlands retirement spot. (5)
- Leaflet could be a pilot? (5)
- Relatives can have lots of diversity. (9)
- Numerate shop surface? (7)
- The sweetest kind of catty comment. (4)
- Little nail The Bard wrote about... (4)
- Hid Tory leanings from neck gland. (7)
- Going head to head for talks with the French. (4,1,4)

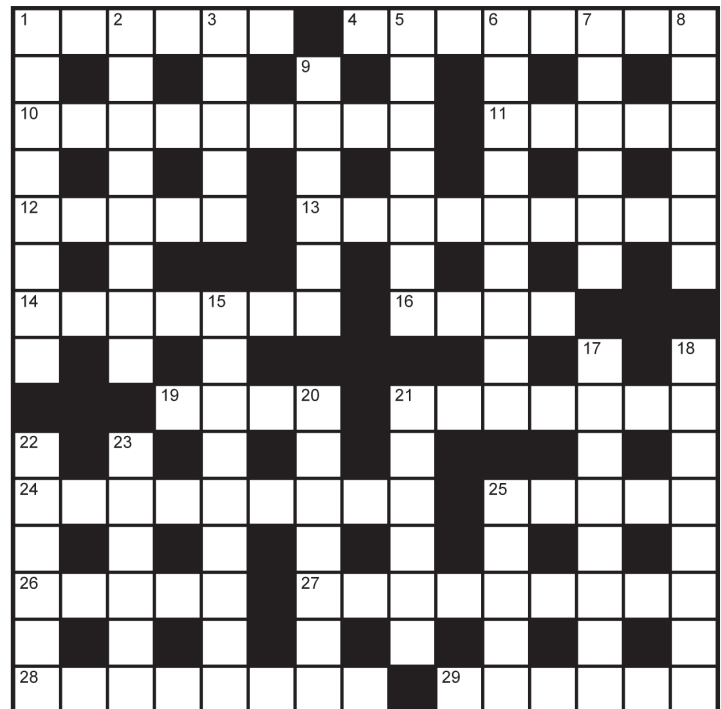
- Milk container taken from taste bud (de rigueur.) (5)
- Material, giving ear (sort of) to Tigers. (5)
- Fancy but natural foodstore that lit up old pictures? (5-4)
- Dog and bone talkers married to trouble and strife. (8)
- Whiter version of 'squirm'. (6)

DOWN

- 'Elf' cacao brewed for where the real work is. (4-4)
- Our Sioux connections make us submissive to the wife! (8)
- Faun - it'll take off, allegedly. (5)
- Witty saying of the pig rambling on. (7)
- Portrayed as marauding... (9)
- Scrub rice container for words in red. (6)
- Accounts book? - see shelf on right. (6)

- Toss out overshoots - it's kind of cleaner! (6)
- Ritual nap - in effect it's just a cover for... (9)
- ...bits of precious metal, said to be powder at a pitch end. (4-4)
- Lovable (said to be entrance and cow, mate.) (8)
- Pry into feedback - not the healthiest way to cook. (4-3)
- Health and Safety (God bless 'em!) want a steel one - over a foot! (6)
- Cast it out, yet it's not moving. (6)
- Chemistry number (or a kitten in pop!) (6)
- Doorkeeper from fabulous Herefordshire (5)

Send your entry to Crossword, Powdene Publicity, Unit 17, St Peter's Wharf, Newcastle upon Tyne NE6 1TZ, to reach us by August 31st.



Name.....

Address

Club.....

CROSSWORD SOLUTION

Congratulations to the five winners of our £10 Prize Crossword for June:

- Sue Johnson of Hanging Heaton WMC, West Yorkshire;
Michael Foy of Tynemouth WMC
Phil Cook of Drub Lane WMC, West Yorkshire;
Yvonne O'Malley of Zingari SC, Notts; and
S Barns of Harworth WMC, Doncaster.



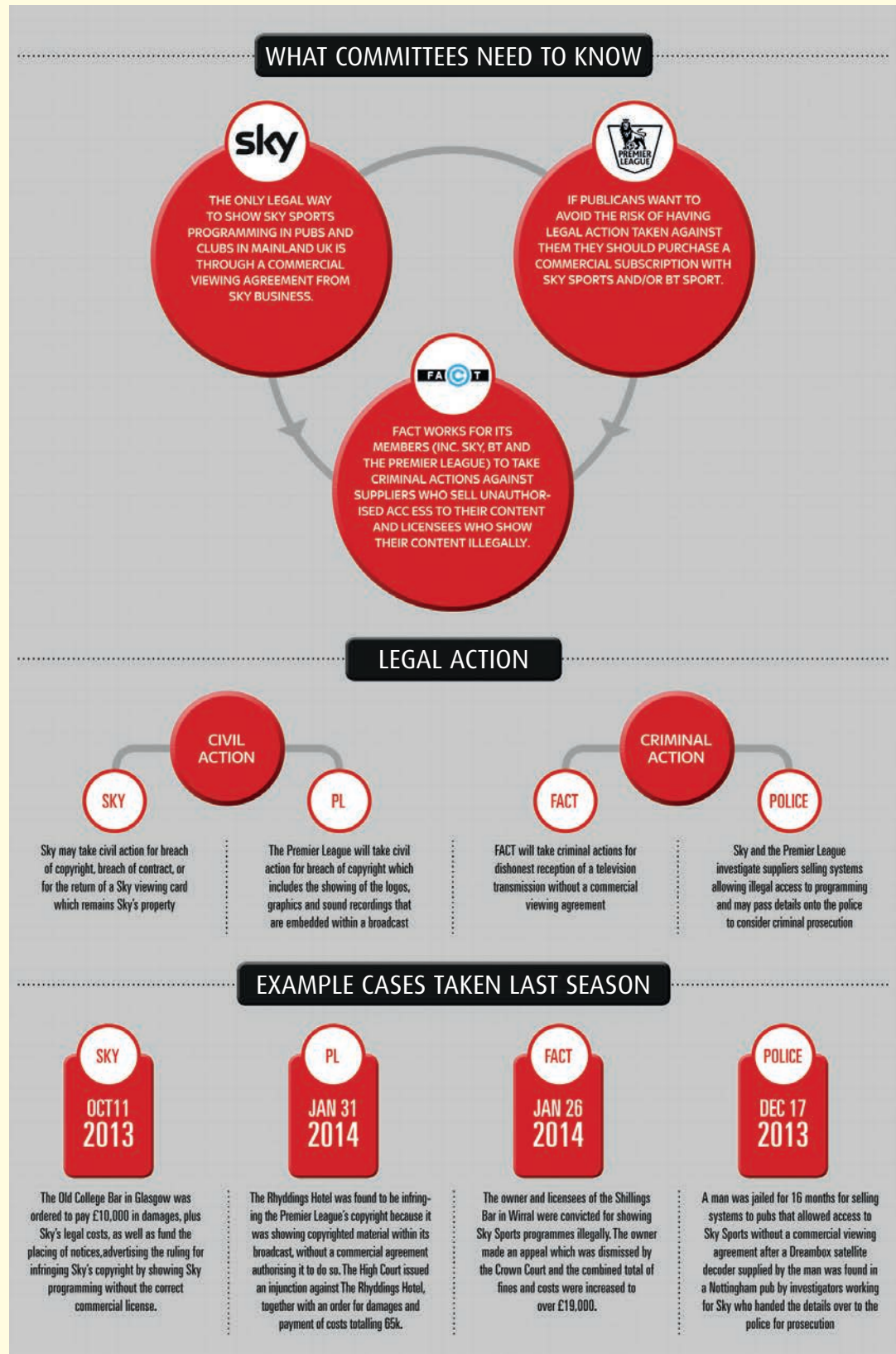
Buy a viewing card - or receive a red card

The start of the new football season this month has seen broadcasters Sky team up with the Premier League and FACT (the Federation Against Copyright Theft) to spell out to pubs and clubs which matches they can legally broadcast. The judgment in favour of Portsmouth landlady Karen Murphy two years ago gave the impression that matches could safely be shown on Saturday afternoons but since then Sky and the Premier League have won a series of judgements to show this is not the case and last season two bars were ordered by the High Court to pay a minimum of £65,000 in costs for broadcasting Premier League football on unauthorised foreign TV systems. In January the First National Wine Bar in Liverpool admitted to infringing the Premier League's copyright by showing Premier League matches from Al Jazeera. An injunction was taken out against the bar and costs awarded against them.

In March The Rhyddings Hotel in Swansea was the first to be taken to court since the Karen Murphy ruling in 2012. The hotel showed Premier League matches to customers from a residential Danish Viasat viewing card but the High Court ruled that the hotel was infringing the Premier League's copyright because it was showing copyrighted material within its broadcast, without a commercial agreement authorising it to do so. So far damages and costs in both cases have amounted to £65,000 each but could rise to more than £125,000.

"Some people might think they are not doing any harm by showing these matches," said Alison Dolan, Deputy Managing Director, Sky Business.

"But illegal screening of Barclays Premier League matches damages investment in football and short-changes law-abiding clubs. It also harms Premier League initiatives including investment into grassroots sport, which includes investing in community facilities, school sport and projects that encourage young people to play football." The people having a drink and watching the match could also be helping investment in football by watching a game at a lower league ground.



Copyright infringement includes the showing of the logos, graphics and sound recordings that are embedded within a broadcast (including items such as the score clock and replay graphics). Sky emphasise that the only legal way to show Sky Sports programming in clubs and pubs in mainland UK

is through a commercial viewing agreement from Sky Business – no other way is legal. Sky may take civil action against you for breach of copyright, breach of contract or for the return of a Sky viewing card – which always remains their property. They also investigate suppliers selling

systems allowing illegal access to Sky Sports programming and pass details onto the police to consider criminal prosecution. **We cannot emphasise enough that you risk legal action by showing Sky Sports or BT Sportsw in your club without a valid commercial agreement.**

Race Discounts

(All offers Tattersalls unless stated otherwise)

LEICESTER:..... Tuesday 19th August (eve).....	£7 (normally £12)
GOODWOOD:..... Friday 22nd August (eve).....	£13 (normally £18)
NEWCASTLE:..... Friday 22nd August (eve)	
.....	£13 including free drink (normally £19.90)
GOODWOOD:..... Saturday 23rd August.....	£19 (normally £24)
REDCAR:..... Saturday 23rd August (eve)	£10 (normally £15)
GOODWOOD:..... Sunday 24th August.....	£19 (normally £24)
CHEPSTOW:..... Bank Holiday	
..... Monday 25th August.....	£12 (normally £20)
NEWCASTLE:..... Bank Holiday Monday 25th August	
.....	£13 including free drink (normally £19.90)
BEVERLEY:..... Saturday 30th August.....	£11 (normally £13)
HAYDOCK:..... Saturday 6th September.....	£12 (normally £22)
THIRSK:..... Saturday 6th September.....	£10 (normally £16)
BATH:..... Saturday 13th September.....	£10 (normally £19)
BATH:..... Sunday 14th September.....	£10 (normally £19)
FFOS LAS:..... Real Ale Festival	
..... Sunday 14th September.....	£10 (normally £16)
NEWBURY:..... Saturday 20th September.....	£16 (normally £20)
UTTOXETER:..... Sunday 21st September	
..... Family Fun Day.....	£10 (normally £20)
HAYDOCK:..... Saturday 27th September.....	£11 (normally £20)
NEWMARKET:..... Saturday 27th September.....	£17 (normally £23)
RIPON:..... Saturday 27th September.....	£12 (normally £16)
REDCAR:..... Saturday 4th October.....	£10 (normally £15)
KELSO:..... Sunday 5th October.....	£9 (normally £15)
UTTOXETER:..... Community Raceday	
..... Sunday 5th October.....	£10 (normally £20)
CHEPSTOW:..... Saturday 11th October.....	£12 (normally £20)
YORK:..... Saturday 11th October.....	£14 (normally £18)
FFOS LAS:..... Sunday 12th October.....	£10 (normally £16)
GOODWOOD:..... Sunday 12th October.....	£19 (normally £24)

CIU Racing Club Booking Form

Number of tickets required (minimum 6) _____ Price per ticket £ _____

Racecourse _____ Date of meeting: _____

Cheque enclosed for £ _____

(Made payable to racecourse involved).

Club: _____

Club Address: _____

_____ Post code: _____

Contact Name: _____

Daytime telephone No: _____

Please send this booking form plus cheque (made payable to the appropriate racecourse) at least three weeks prior to meeting to:

Jean Garrett, Club Journal, Unit 17, St. Peter's Wharf, Newcastle upon Tyne NE6 1TZ.

Never mind the Queen, will you marry me?



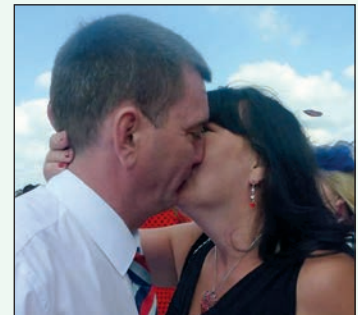
Paul goes down on one knee...



Kelly shows her surprise...

A club's special outing to Royal Ascot became a little bit more special when one of the group went down on one knee.

Paul Walsh from Willesden WMC in London proposed to his girlfriend Kelly Roy as the traditional Queen's procession was passing along the racecourse. And, as our pictures show, Kelly, who has been with Paul for three years, was delighted to say "yes."



and the couple celebrate with a kiss.

A group of 44 from the club, aged 19 to 60-plus, enjoyed their special day, organised by Entertainment Committee members Nicole Carroll and Robyn Simmons. They also held a £5-a-head punters' competition, which was won by Gary Yerby Junior. "The weather was amazing," Said Nicole. "We had picnics and drank Pimm's and champagne before returning to the club for a disco. It was a great day and we'll be making it an annual event."



The club's men (above) and women set off for the big day.



CIU RACING CLUB

THE CIU Racing Club uses the bulk buying power of our 2,000 clubs to obtain special discounts from racecourses. You can make a booking by filling in the form on this page along with a cheque made out to the appropriate racecourse.

To obtain the discount we send all the forms to the racecourse together as

one block booking and they will post the tickets on the Monday of the week leading up to the meeting. If you have not received an acknowledgment letter or if tickets have not arrived after the post is delivered three days before the meeting ring **Jean Garrett on (0191) 2650040**. Tickets are sent to the club - otherwise anyone could buy them - and are usually not refundable.

We need to receive your booking THREE WEEKS before the meeting otherwise we cannot guarantee you will receive the discount because late bookings do not save the courses any work.

July 6 was a day to remember for a club in Harrogate as nearly 200 cyclists from the Tour de France went right past its door. The first day of the Tour finished in Harrogate but the following day it returned and passed Bilton WMC on its way from York to Sheffield. "We organised a family event which took in the once-in-a-lifetime sight of the actual Tour de France going right past the club," said Club Treasurer Alan Huddart. "And everybody had a great day. "It started at 9am with the outside bar opening and at 10am the caravan started to pass the club – this is the two-hour parade of sponsors' vehicles, support crews, advertisers and all the other support vehicles. "Just after noon, the tension grew and then we spotted them coming – nearly 200 cyclists riding as though their lives depended on it! They passed the club at around 40mph and the applause was deafening! "After the cyclists had passed, we had an afternoon of live music from The Shades, Biz Denton and Zoot Suit – all local acts that went down really well and kept the crowd of over 500 entertained until early evening. This was one of the most memorable days ever for the club and certainly the best day I've had in the five years that I've been a member."

Bon Dieu – What a day



The scene outside Bilton WMC, which had a catering van, an ice cream seller, bouncy castles, fairground rides and craft stalls. Below: the big moment as the cyclists pass by at 40mph.



Three club members enter into the spirit. Pete Plumpton with the beret is pictured with Liz Staiano and Patrick Dunlop, who is also Head of News at local radio station Stray FM.



This year's Northumberland Snooker Champions are Newcastle Labour (A) who beat Westfield SC (A) 3-0 at King Street SC. Pictured (left to right) are: Frank Flanningan, Darren Burns, Michael Todd, Robbie Purdham, Decka Carroll and Dave Harris. Gary Wilson from Wallsend RAOB on Tyneside is our new National Snooker champion. He defeated Rhydian Richards from Merthyr Tydfil Labour Club 4-0 in the final at Denton WMC in Manchester shortly before we went to press.



SPORTS SHORTS

• This year's Union greyhound event will be held at Owlerton Stadium in Sheffield on September 23. Posters and entry forms have been sent to all clubs.

Sky releases its 2014/15 prices

THE DEAL FOR CLUBS					
Rateable Value	£0 - £3500	£3,500 - £5,000	£5,000 - £8,500	£8,500 - £12,000	£15,000+
Sky TV price per month*	£155.00	£260.00	£366.00	£577.00	£788.00
Sky TV price per month with WiFi (set-up fee applies)	£105.00	£210.00	£316.00	£527.00	£738.00
Equivalent weekly cost of Sky TV with WiFi (Subscription payable monthly)	£24.23	£48.46	£72.92	£121.62	£170.31

*Subscription prices are shown per month and exclude VAT

Sky increased its prices by 5 per cent on August 1 after a three-year price freeze. At the same time it has announced the launch of Sky Sports 5, the first TV channel dedicated to European football. The new channel will show the Champions League – though it will be moving to BT Sport in 2015 – Euro 2016 Qualifiers and the Spanish La Liga and Copa del Rey. Clubs are again reminded that showing Saturday afternoon matches breaches the copyright of Sky and the Premier League as several pubs have found to their cost. See Page 18.